

Dear customer,

please fill out the following questionnaire, so that we can evaluate which upgrades are necessary or recommendable for you. Also feel free to contact us if you have any questions.

Thank you very much!

Please enter the serial number of your system:

---

**1. Does your MTS 300 have a drawer for the keyboard?**



yes



no

**2. How wide is your system?**



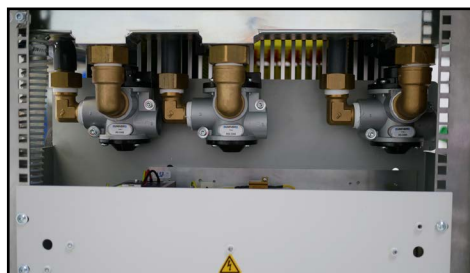
80 cm

90 cm

**3. What kind of vacuum distribution do you have?**

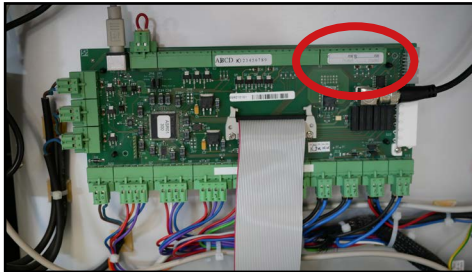


plastic tube



vacuum bar

4. What kind of vacuum control do you have? (Located behind the front panel)

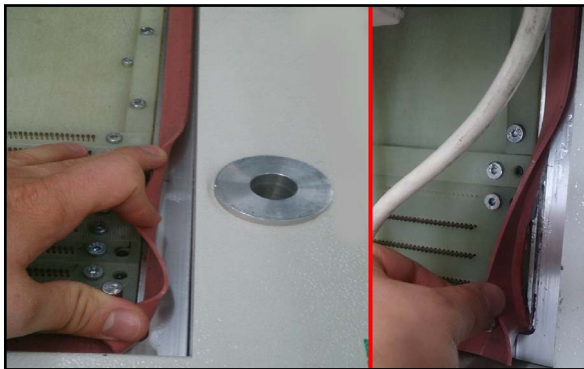


relay circuit

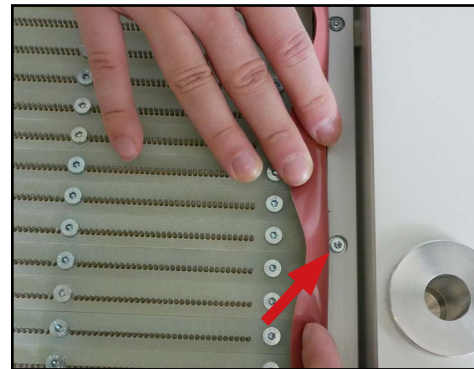
STPL

ASR (Shown in picture)

5. How is the vacuum sealing rubber attached?

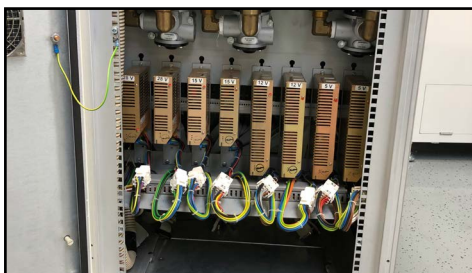


glued



clamped/screwed

6. What kind of system supply do you use?



single parts

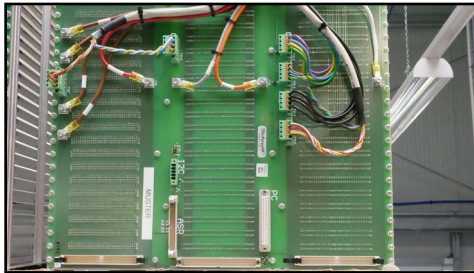


combined power supply (Vicor Flat Pack)

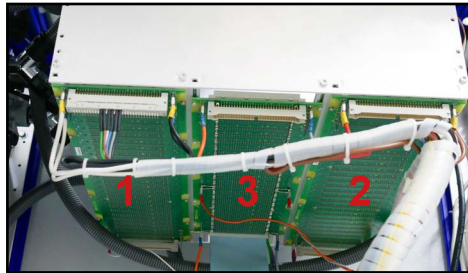


power supply MP1

7. What kind of backplane do you have?



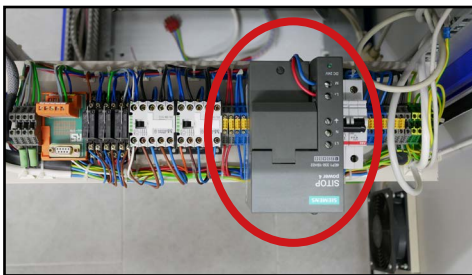
1 part



2 parts

3 parts

8. Which brand of power supply do you use in your distribution unit?



TDK

Siemens

Others

9. Is there a main inlet filter?



yes

no

10. Is there a test rack with 10 slots built-in?



yes

no

**11. Please enter the configuration of the PC belonging to the system:**

PC operating system \_\_\_\_\_

Interface (SINT 01, 02, 03 or 04) \_\_\_\_\_

CITE version \_\_\_\_\_

**12. Do you use a selftest fixture?**

yes

no

**13. Is there special wiring in your system? (E.g. RS232/CAN)**

yes

no

**Please send this questionnaire, a current selftest without fixture and a picture with a top view of the interface to:**

[service@digitaltest.com](mailto:service@digitaltest.com)

(If you use driver sensors, please use the selftest 8.51.)

**You can always find the current selftest on our customer portal:**



<http://documents.digitaltest.de/index.php/Login?lang=en>