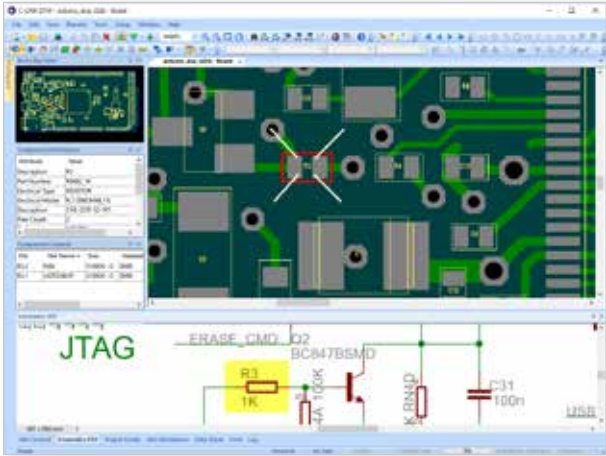




DESIGN TO MANUFACTURING



## C-LINK DTM

CAD/CAM SOFTWARE

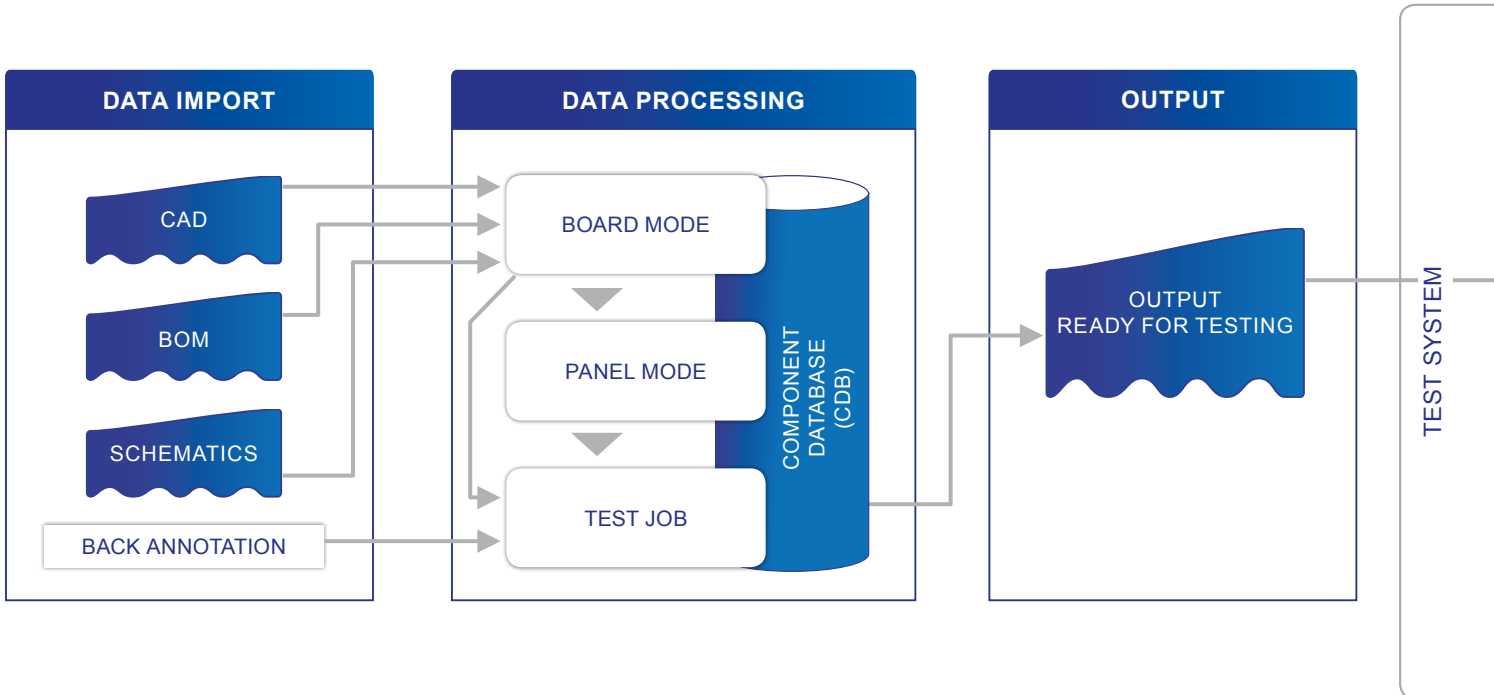
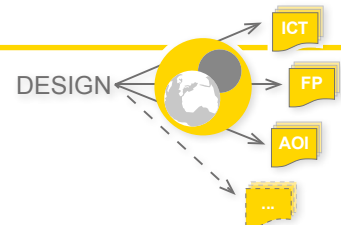
- > Cuts test cost
- > Reduces time to market
- > Improves product quality
- > Instant data generation
- > Automatic BOM import
- > Rapid, error free, complete data processing
- > Automatic data generation for fixtures and test programs
- > Automatically highlight differences in PCB revisions (Compare Boards)

C-LINK DTM takes all major CAD systems and automates the translation of design data to any test inspection system.



## C-LINK DTM

CAD/CAM SOFTWARE



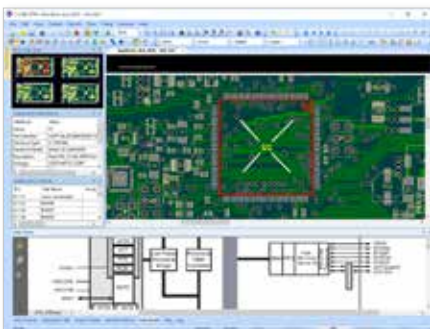


## LINK BETWEEN CAD, TEST AND REPAIR

1

### DATA IMPORT

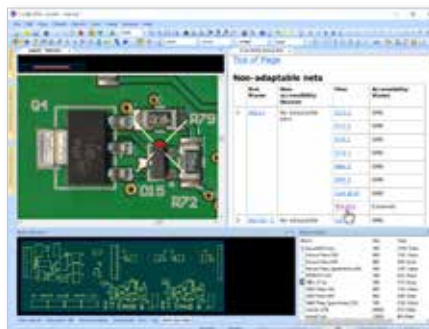
C-LINK imports all design data for the PCB including: layout, netlist, panel information and bill of materials. Fixture definitions can also be back annotated into C-LINK.



2

### DATA PROCESSING

With a full set of tools like version management, DFT checks, automatic pin placement or mechanical fixture design, C-LINK completes the data for test and inspection.



3

### OUTPUT

Machine ready outputs for AOI, Boundary Scan, in-circuit and flying probe test plus the flexible generic output processor feed the equipment of the production floor.



## C-LINK FEATURES

### Import Design Data

- > The CAD data of board layout and the schematics are automatically imported.

### BOM Import Wizard

- > This powerful module imports Bill of Material (BOM) in various formats, including block formatted tables.

### Visual Support

- > Images of the board can be imported for each assembly variant as additional graphical layer.

### Report Generator

- > Reports have hyperlinks to the PCB layout display to identify critical areas quickly. The Report Generator can generate customized reports in a variety of different formats.

### Compare Boards and Redesign

- > This module compares the PCB variants and versions in assembly and netlists. A detailed report informs the user about differences.
- > It ensures that existing fixtures can be re-used or adapted to the new board version.

### Schematics View

- > Bidirectional communication with the board layout (cross probing).
- > Display of accessibility and test coverage.
- > Back annotation of the fixture channel number.

### Test Job

- > Creates reports about accessibility and testability for DFT.
- > Data generation for all test equipment of the production.

## Company

Digitaltest is a strong partner of the electronics industry and has more than 35 years of experience in development, implementation and support of automated test equipment (ATE) for printed circuit boards.

The complete product portfolio of the global company includes hardware technology, software to automate the production and evaluate the production process with its quality management software.

### Digitaltest GmbH

Lorenzstraße 3  
76297 Stutensee /// Germany  
Phone +49 7244 9640-0  
E-mail [info@digitaltest.de](mailto:info@digitaltest.de)

